

CUST. MODEL:	REF.
CUST. P/N	DWG FILE:

DESCRIPTION CONTROL			
REV.	DESC.	DATE	APP.

### SPECIFICATIONS

Current Rating:  
2.0 Amp

Insulator Resistance:  
1000 Megohms min.

Contact Resistance:  
30 m ohms max.

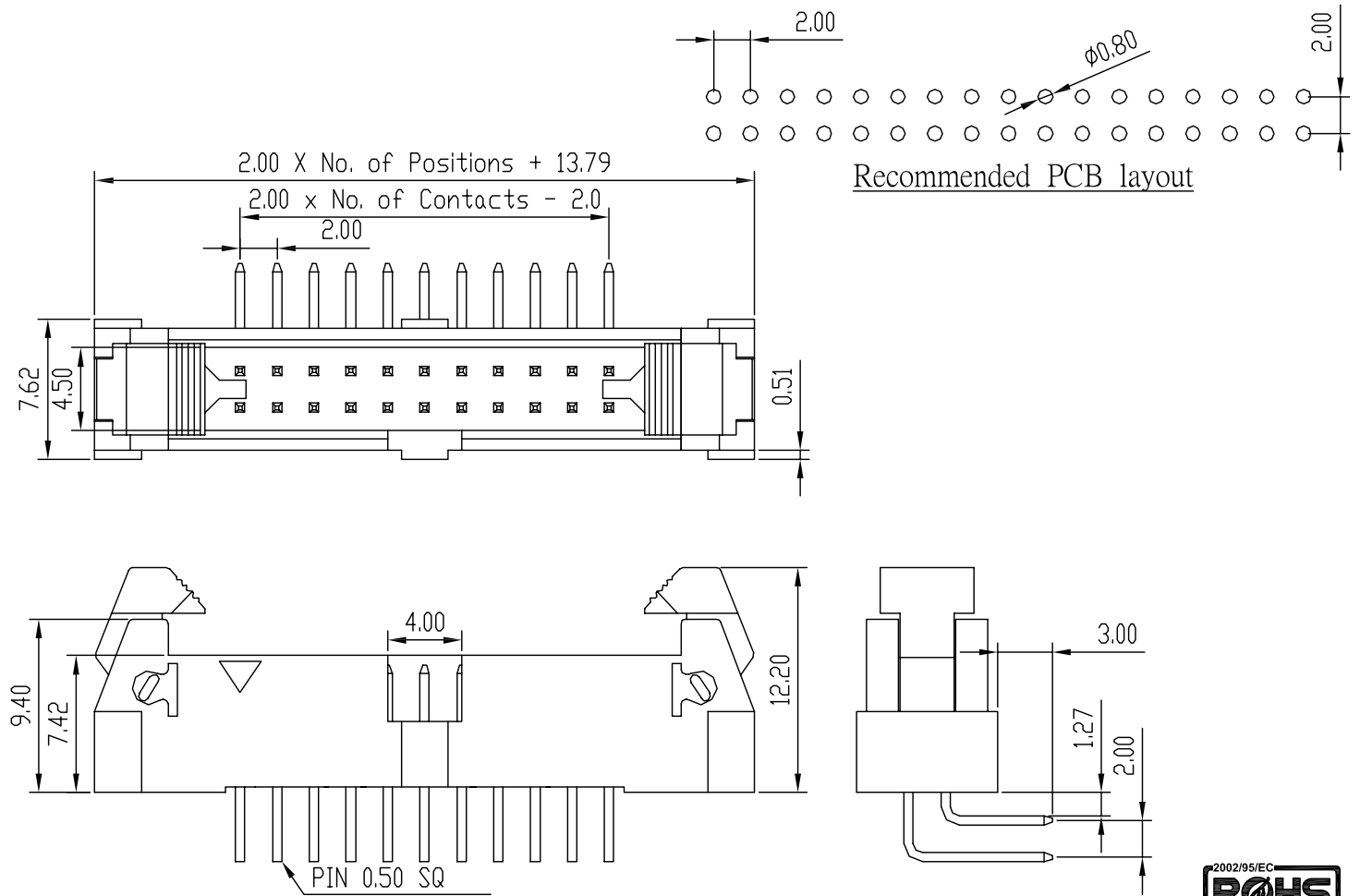
Dielectric withstanding:  
AC 500V/minute

Operating Temperature:  
-40°C to +105°C

Contact Material:  
Copper Alloy

Insulator Material:  
Nylon-6T Glass Filled Polyester  
UL94V-0

Plating: Gold or Tin over 50u" Ni



Recommended PCB layout

BB N B-20 R 05 2 XX-01 G-XX

N: Nylon  
Color  
Pitch 2.00  
Right Angle Type  
Square Pin  
Row of Pin  
Number of Contact

Plastic High  
17:17mm  
G: Gold Plated  
T: Tin Plated  
H: Duplex Plated  
Contact Plating  
01 Normal  
03 3u"  
: :  
: :



UNLESS OTHERWISE SPECIFIED SURFACE FINISH ALL OVER TOLERANCES mm  METRIC .X = ±0.38 .XX = ±0.25	DRAW:	DATE:	TITLE:
	<i>Chubby</i>	01/10/07	Pitch:2.0mm Ejector Header Right Angle Dip Type
	CHECK:	APPROVE:	MODEL CODE:
	KEVIN	<i>TONY</i>	BBNB-20R052XX-50G-17
			<b>誠州電子有限公司</b> <i>Sincere State Electronics Co.,Ltd.</i>

NO	DESCRIPTION	QTY	SHEET 1 OF 1
----	-------------	-----	--------------